

Artistic Career

1999 Studio scholarship from Berlin Senate for 5 years

2003 Galerie im Körnerpark, Berlin, first exhibition in a municipal gallery, with sculptures of stone and copper thread

2003 Catalogue KONVEX (32 pages)

2003 until today Cooperation with galleries for instance in Berlin, München, Darmstadt und Leipzig



GLOSTER, 30 x 30 x 30 cm, chalk, ink, 2000

2008 Große Kunstausstellung, Haus der Kunst, München „Medium drawing“

2008 Nomination for Art Award Schöneberg-Tempelhof, Berlin



TURM 1, 103 x 50 x 50 cm, patinated copper thread, 2006

2009 Masterhouses Kandinsky/ Klee, Dessau, participation in the exhibition „Tangenten“



HELIX, 190 x 110 x 110 cm, patinated copper thread, 2009, former studio of Wassily Kandinsky

2010 Solo exhibition Galerie Bernau, sculptures and colour fields



Galerie Bernau, 2010, exhibition view

2010 Catalogue
SKULPTUR - KÖRPER - RAUM (48 pages)

2011 Drawing Symposium University of
Huddersfield, UK

since 2012 Solo exhibitions and
participations in German art associations,
such as

KV Hockenheim (2012)

KV Ribnitz-Damgarten (2012)

KV Rhein-Sieg (2012)

KV Oerlinghausen (2013)

KV Cuxhaven (2014)



KV Oerlinghausen 2012, exhibition view, sculptures and cubes

2012 Galerie Wedding, municipal gallery
Berlin „Imaginarium III“, wall sculptures and
colour fields

2012 Participation in exhibition „European
sculpture - methods, materials, poetry“
at Edsvik Art Hall, Sollentuna/ Stockholm,
Sweden



Galerie Wedding 2012, exhibition view, wall sculptures and colour fields

2012 Artist in Residence, St. Barthélemy, French West Indies, first photographic staging of sculpture at the sea, photographic installations to integrate outer space



TETRA 3, 40 x 35 x 30 cm, bicoloured patinated copper thread, 2009

2013 Catalogue
WELLENGANG - WAVE SURGE - FLUX DE VAGUES (60 pages)
Sculptures in dialogue with water and nature



KUBUS 1, 100 x 90 x 90 cm, patinated copper thread, 2007

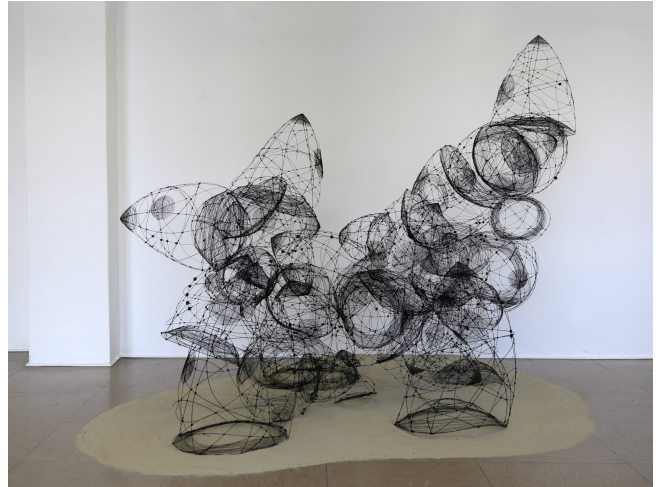


NO, 140 x 90 x 70 cm, patinated copper thread, 2012



TURM 4, 103 x 70 x 60 cm, patinated copper thread, 2006

2014 Jury Award for sculpture, LebensArt
Stiftung, Köln
Modular sculpture



DOME, 220 x 180 x 150 cm, patinated copper thread, 2014, KV
Cuxhaven, exhibition view

2015 Museum Modern Art, Hünfeld
Modular sculpture



HYPERBOLIC, 280 x 100 x 120 cm, patinated copper thread,
2014, exhibition view



CASTLE IN THE AIR, 230 x 120 x 110 cm, patinated copper
thread, 2015, Museum Modern Art, Hünfeld, exhibition view



BALL CONSTRUCTION, 200 x 140 x 100 cm, patinated
copper thread, 2014, exhibition view

2014 Museum Modern Art, Hünfeld,
participation in exhibition „Kunst Total“

FLUID, 150 x 50 x 50 cm, powder-coated
copper thread, 2014



2015 photographic staging of sculpture
outdoors

DROP, 120 x 65 x 65 cm, powder-coated
copper thread, 2015

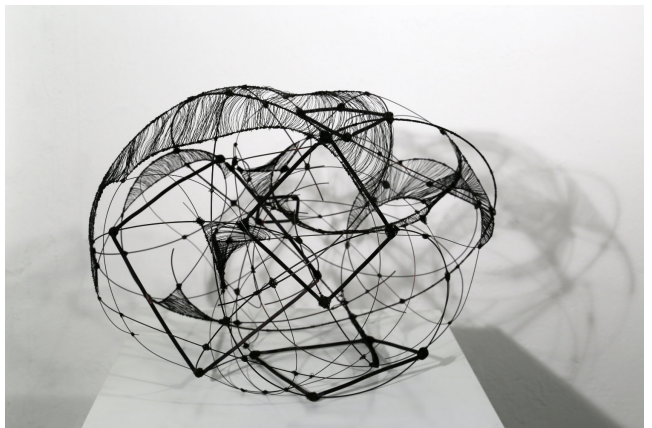


2016 Nomination Art Award Ebersberg



GLOBE, 80 x 80 x 80 cm, patinated copper thread, 2016

2017 Symposium, 7th Art Week KV
Kleinmachnow



ORKANISCH, 70 x 60 x 50 cm, patinated copper thread, 2017

2017 Hanging sculptures, installation with
sculptures, cubes, light and mirrors,
München



Sculptures and light, Installation, exhibition view, München 2017

2018 Drawings, ink, ballpoint pen on
Fabriano



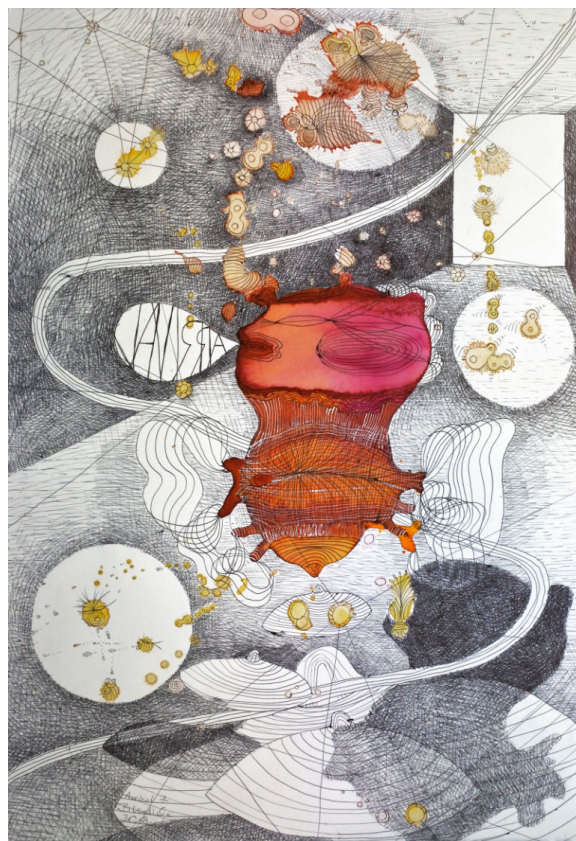
SCENES 12, 38 x 28 cm, 2018



SCENES 20, 28 x 19 cm, 2018



ARRIVAL 6, 56 x 38 cm, 2018



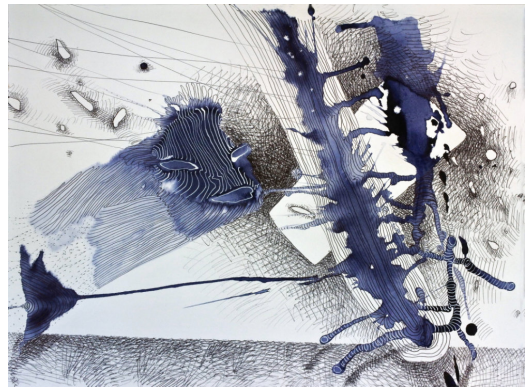
ARRIVAL 7, 56 x 38 cm, 2018

2018 Drawings, ink, ballpoint pen on
Fabriano

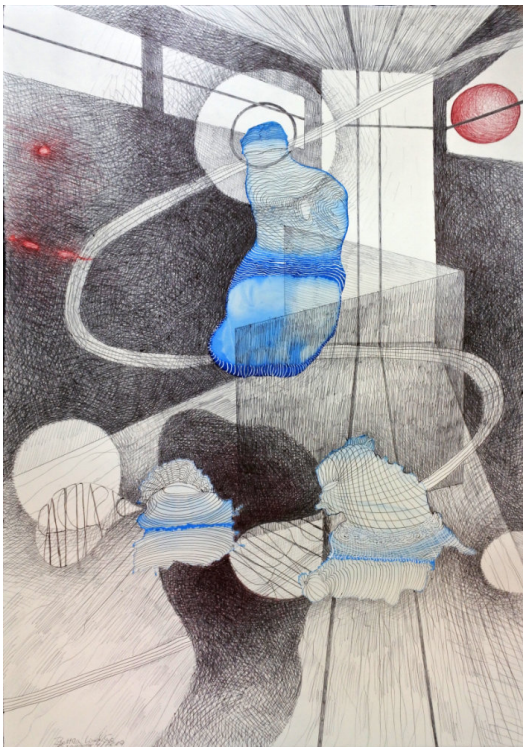


SCENES 1, 38 x 28 cm, 2018

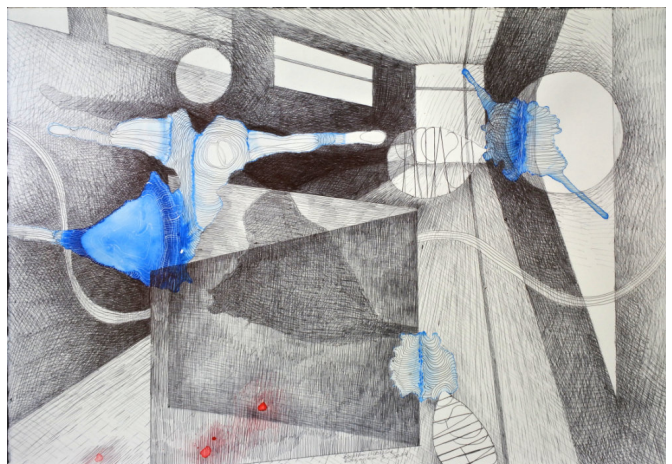
2019 Drawings, ink, ballpoint pen on
Arches



SCENES 9, 38 x 28 cm, 2018



DISAPPEAR 4, 38 x 56 cm, 2019



DISAPPEAR 3, 56 x 38 cm, 2019

2019 Galerie am Klostersee, Kloster Lehnin,
FLUID and KUBUS 1 staged on the lake

